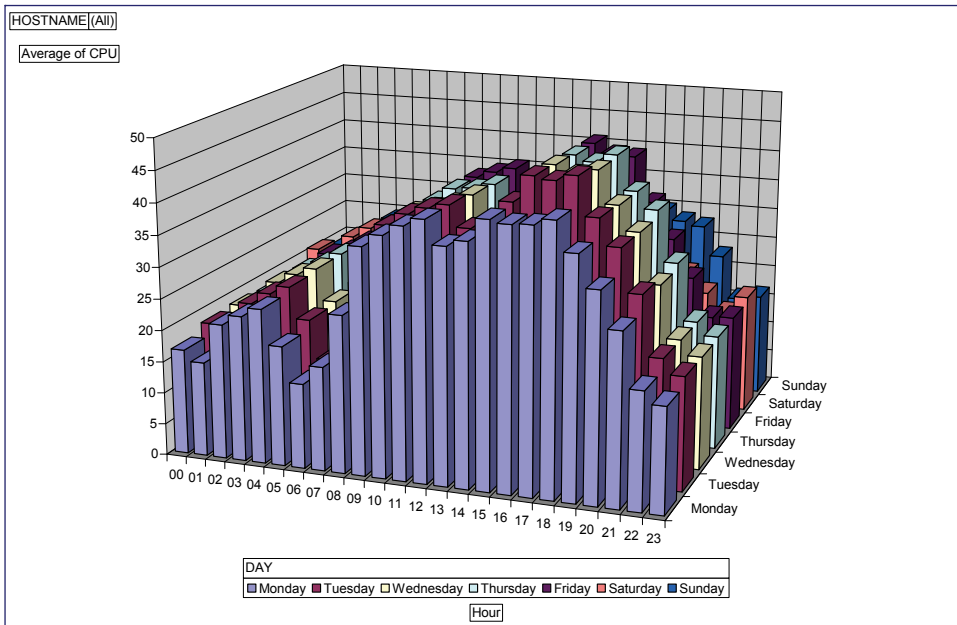


## Graphic Performance Monitor™



## GPM Data Warehouse

Sample Excel pivot chart generated by the GPM Data Warehouse facility

### System Reporting Has Never Been Easier

The GPM Data Warehouse facility is an optional, add-on capability for GPM that simplifies the long-term storage and analysis of performance and capacity planning data.

Data is automatically extracted from one or more Unisys ClearPath hosts on a daily basis and stored in a Microsoft SQL Server database.\* Having the data available in SQL Server off-loads the analysis and reporting overhead from the ClearPath host and allows the use of standard reporting tools for performance and capacity planning reporting.

In addition, GPM Data Warehouse provides an Excel add-in that automates the production of daily and long-term reports that can be emailed or published to a web server.

### Store and Report

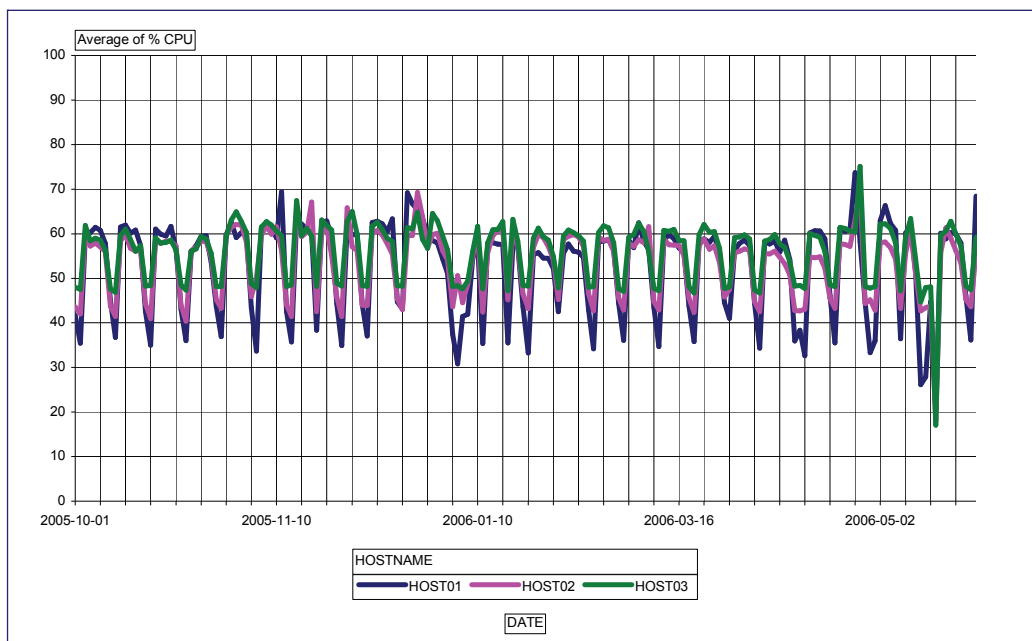
Storing the performance and capacity data in a SQL Server database makes the data available for many off-the-shelf analysis tools such as Crystal Reports and Visual Basic. It also allows the SQL Server Online Analytical Processing (OLAP) tool or other OLAP products, such as Affinité Europe's Board M.I.T., to be used for sophisticated data analysis and data mining.

\*Microsoft SQL Server and Excel are not provided as part of this package.  
This software must be separately licensed and installed for use with the GPM Data Warehouse facility.

---

## Features:

- PC based configuration wizard automatically installs the ClearPath host software, discovers the available GPM performance data and allows the configuration of data extraction, maintenance, reporting and data distribution.
- SQL Server job is automatically scheduled to control the daily extraction of performance and capacity data from selected hosts.
- Daily reports are generated using the Excel add-in. These reports can be sent as emails to one or more recipients and can be automatically published to a web server.
- Trend reports can be generated to show the current trends in resource usage and activity and forecast future requirements.
- Ad hoc reports and graphs can be generated using the Excel add-in. This includes a SQL query builder that allows the selection of any data from the SQL Server database. User data in the database can be integrated with GPM data to provide comprehensive reports and graphs.
- Pivot tables and graphs can be generated to allow the analysis across multiple entities such as hosts, workloads or programs. This is particularly useful for analyzing the data collected from multiple Windows servers.
- Long-term data is maintained automatically and older data is purged from the database according to user specifications.



*Sample Excel pivot chart generated by the GPM Data Warehouse facility*

**See for Yourself.....** Contact us to arrange an evaluation

---

**Affinité Europe - Specialised Software Solutions**  
**Suite 37, Prospect Business Centre, Prospect Street, Huddersfield, HD1 2NU, UK**  
**Tel: +44(0)1484 531829 – Fax: +44(0)1484 434984**  
**Web: [www.affinite.co.uk](http://www.affinite.co.uk) – Email: [office@affinite.co.uk](mailto:office@affinite.co.uk)**

---